




DAT NO.	OE NO.	APPLICATION	SPECIFICATION	DESCRIPTION
14 122 101	305 421 0401	MERCEDES	DD: 410 x HB: 298 x H: 213 10 Holes	EN Brake Drum DE Bremstrommel FR Tambour de frein
		MODEL: OM403		
14 122 107	305 423 0401	MERCEDES	DD: 410 x HB: 298 x H: 306 10 Holes	EN Brake Drum DE Bremstrommel FR Tambour de frein
		MODEL: ACTROS1831 AK/LS		
14 122 113	305 423 0401	MERCEDES	DD: 410 x HB: 298 x H: 306 10 Holes	EN Brake Drum DE Bremstrommel FR Tambour de frein
		MODEL: ACTROS1831 AK/LS		
14 122 108	346 423 0501	MERCEDES	DD: 410 x HB: 298 x H: 280 10 Holes	EN Brake Drum DE Bremstrommel FR Tambour de frein
		MODEL: 748.232/233/234 748.236/270/272		
14 122 114	346 423 0501	MERCEDES	DD: 410 x HB: 298 x H: 280 10 Holes	EN Brake Drum DE Bremstrommel FR Tambour de frein
		MODEL: 748.232/233/234 748.236/270/272		
14 122 106	346 423 0601	MERCEDES	DD: 410 x HB: 270 x H: 298 10 Holes	EN Brake Drum DE Bremstrommel FR Tambour de frein
		MODEL: BM 397		

7



Brake Drum
Bremstrommel
Tambour de frein

DAT[®]
DEUTSCHE AUTOTEILE

DESCRIPTION		SPECIFICATION	APPLICATION	OE NO.	DAT NO.
EN	Brake Drum	DD: 410 x	MERCEDES	624 421 0201	14 122 102
DE	Bremstrommel	HB: 298 x H: 237			
FR	Tambour de frein	10 Holes			
			MODEL: OM403		
					
EN	Brake Drum	DD: 410 x	MERCEDES	658 421 0001	14 122 104
DE	Bremstrommel	HB: 298 x H: 237			
FR	Tambour de frein	10 Holes			
			MODEL: OM403		
					
EN	Brake Drum	DD: 410 x	MERCEDES	658 421 0001	14 122 115
DE	Bremstrommel	HB: 298 x H: 237			
FR	Tambour de frein	10 Holes			
			MODEL: OM403		
					
EN	Brake Drum	DD: 430 x	MERCEDES	335 421 0201	14 122 112
DE	Bremstrommel	HB: 350 x H: 179			
FR	Tambour de frein	6 Holes			
			MODEL: 739.0		
					
EN	Brake Drum	DD: 440 x	MERCEDES	335 423 0101	14 122 110
DE	Bremstrommel	HB: 373 x H: 222			
FR	Tambour de frein	12 Holes			
			MODEL: 739.0/1, 740.3		
					
EN	Brake Drum	DD: 430 x H	MERCEDES	335 421 0301	14 122 111
DE	Bremstrommel	B: 373 x H: 190			
FR	Tambour de frein	12 Holes			
			MODEL: 739.0, 749.0/1		
					

7











DAT NO.	OE NO.	APPLICATION	SPECIFICATION	DESCRIPTION
14 122 117	301 423 1201	MERCEDES	DD: 410 x H: 306 10 Holes	<div style="display: flex; flex-direction: column; gap: 5px;"> <div>EN Brake Drum</div> <div>DE Bremstrommel</div> <div>FR Tambour de frein</div> </div>
		<p>MODEL: BM 300/301/356/373, 600/613</p>		





Brake Drum
Bremstrommel
Tambour de frein

DAT[®]
DEUTSCHE AUTOTEILE

DESCRIPTION		SPECIFICATION	APPLICATION	OE NO.	DAT NO.
EN	Brake Drum	DD: 420 x H: 226	BPW	031 096 7130	14 122 109
DE	Bremstrommel	10 Holes			
FR	Tambour de frein				
					
EN	Brake Drum	DD: 420 x HB: 290	BPW	031 06 67 290	18 122 102
DE	Bremstrommel	H: 238			
FR	Tambour de frein	6 Holes			
			MODEL: OM403		
					
EN	Brake Drum	DD: 420 x HB: 290	BPW	031 06 77 040	18 122 101
DE	Bremstrommel	H: 275			
FR	Tambour de frein	10 Holes			
			MODEL: OM403		
					
EN	Brake Drum	DD: 420 x HB: 290	BPW	031 06 77 040	18 122 109
DE	Bremstrommel	H: 275			
FR	Tambour de frein	10 Holes			
			MODEL: 739.0		
					
EN	Brake Drum	DD: 420 x	BPW	031 06 77 630	18 122 103
DE	Bremstrommel	HB: 290 x H: 297			
FR	Tambour de frein	10 Holes			
			MODEL: 739.0/1, 740.3		
					
EN	Brake Drum	DD: 420 x	BPW	031 066 7540	18 122 105
DE	Bremstrommel	HB: 290 x H: 253			
FR	Tambour de frein	10 Holes			
			MODEL: HS / HZ		
					



DAT NO.	OE NO.	APPLICATION	SPECIFICATION	DESCRIPTION
18 122 106	031 096 7190	BPW	DD: 420 x HB: 290 H: 226 10 Holes	<p>EN Brake Drum</p> <p>DE Bremstrommel</p> <p>FR Tambour de frein</p>
		MODEL: OM403		
18 122 107	031 067 7520	BPW	DD: 420 x HB: 290 H: 284 10 Holes	<p>EN Brake Drum</p> <p>DE Bremstrommel</p> <p>FR Tambour de frein</p>
		MODEL: ACTROS1831 AK/LS		
18 122 108	031 067 7560	BPW	DD: 420 x HB: 290 H: 248 6 Holes	<p>EN Brake Drum</p> <p>DE Bremstrommel</p> <p>FR Tambour de frein</p>
		MODEL: ACTROS1831 AK/LS		
18 122 112	031 066 7010	BPW	DD: 420 x HB: 290 H: 327 10 Holes	<p>EN Brake Drum</p> <p>DE Bremstrommel</p> <p>FR Tambour de frein</p>
		MODEL: 748.232/233/234 748.236/270/272		
18 122 113	031 066 7120	BPW	DD: 420 x HB: 290 H: 246 10 Holes	<p>EN Brake Drum</p> <p>DE Bremstrommel</p> <p>FR Tambour de frein</p>
		MODEL: 748.232/233/234 748.236/270/272		
18 122 114	031 066 7620	BPW	DD: 420 x HB: 290 H: 226 10 Holes	<p>EN Brake Drum</p> <p>DE Bremstrommel</p> <p>FR Tambour de frein</p>

7



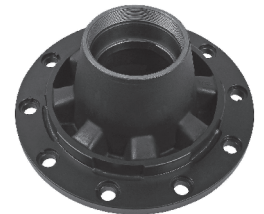
DESCRIPTION	SPECIFICATION	APPLICATION	OE NO.	DAT NO.
EN Wheel Hub	DD: 420 x HB: 290	BPW	031 066 7620	18 254 101
DE Radnabe	H: 226			
FR Moyeu de roue	10 Holes			



EN Wheel Hub		BPW		18 254 102
DE Radnabe				
FR Moyeu de roue				



EN Wheel Hub		BPW		18 254 103
DE Radnabe				
FR Moyeu de roue				



EN Wheel Hub		BPW		18 254 104
DE Radnabe				
FR Moyeu de roue				



EN Brake Drum Set		BPW	3602E	18 113 104
DE Bremstrommel				
FR Tambour de frein				



EN Wheel Hub		BPW		18 254 201
DE Radnabe				
FR Moyeu de roue				







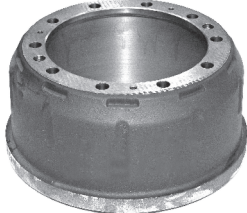
DAT NO.	OE NO.	APPLICATION	SPECIFICATION	DESCRIPTION
77 122 101	1.064.0260.01	SAF	DD: 420 x HB: 300 H: 227 10 Holes	<div style="display: flex; flex-direction: column; gap: 5px;"> <div>EN Brake Drum</div> <div>DE Bremstrommel</div> <div>FR Tambour de frein</div> </div>





Brake Drum
Bremstrommel
Tambour de frein



DESCRIPTION		SPECIFICATION	APPLICATION	OE NO.	DAT NO.
EN	Brake Drum	DD: 410 x	MAN	81 50110 0144	13 122 107
DE	Bremstrommel	HB: 298 x H: 300			
FR	Tambour de frein	15 Holes			
			MODEL: F 7/8, F 90, L/M/F 2000		
					
EN	Brake Drum	DD: 410 x H: 250	MAN	81 50110 0213	13 122 101
DE	Bremstrommel	10 Holes			
FR	Tambour de frein	HB: 298			
			MODEL: F2000		
					
EN	Brake Drum	DD: 410 x	MAN	81 50110 0232	13 122 105
DE	Bremstrommel	HB: 298 x H: 232			
FR	Tambour de frein	10 Holes			
			MODEL: F 7/8, F 9 (498), M/F 90, L 2000 (L67), M/F 2000		
					



DAT NO.	OE NO.	APPLICATION	SPECIFICATION	DESCRIPTION
69 254 101	21204561	ROR		EN Wheel Hub DE Radnabe FR Moyeu de roue

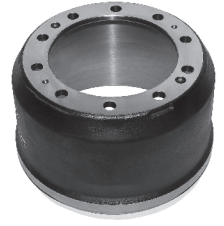




Brake Drum
 Bremstrommel
 Tambour de frein

DAT[®]
 DEUTSCHE AUTOTEILE

DESCRIPTION	SPECIFICATION	APPLICATION	OE NO.	DAT NO.
EN Brake Drum DE Bremstrommel FR Tambour de frein	DD: 414 x HB: 280 x H: 277 10 Holes	RENAULT MODEL: TR/PR, Kerax, AE	5010 098 949	16 122 102











DAT NO.	OE NO.	APPLICATION	SPECIFICATION	DESCRIPTION
11 122 113	1385 893	SCANIA	DD: 413 x HB: 295 x H: 320.5 10 Holes	<p>EN Brake Drum</p> <p>DE Bremstrommel</p> <p>FR Tambour de frein</p>
		<p>MODEL: AD/ADA 90, AD 100</p>		
11 122 112	285 894	SCANIA	DD: 413 x HB: 295 x H: 263 10 Holes	<p>EN Brake Drum</p> <p>DE Bremstrommel</p> <p>FR Tambour de frein</p>
		<p>MODEL: AMD105, ASA 70</p>		





Brake Drum
Bremstrommel
Tambour de frein

DAT[®]
DEUTSCHE AUTOTEILE

DESCRIPTION		SPECIFICATION	APPLICATION	OE NO.	DAT NO.
EN	Brake Drum	DD: 410 x	VOLVO	1599009	12 122 106
DE	Bremstrommel	HB: 282 x H: 261			
FR	Tambour de frein	10 Holes			
			MODEL: FL 7, F10, FH12		
					
EN	Brake Drum	DD: 410 x	VOLVO	3 171 744	12 122 112
DE	Bremstrommel	HB: 282 x H: 260.5			
FR	Tambour de frein	10 Holes			
			MODEL: FL 6, F10, FH12		
					
EN	Brake Drum	DD: 410 x	VOLVO	1599010	12 122 114
DE	Bremstrommel	HB: 282 x H: 274			
FR	Tambour de frein	10 Holes			
			MODEL: B12,B10, FL 7, F10, FH12		
					
EN	Brake Drum	DD: 410 x	VOLVO	1599011	12 122 116
DE	Bremstrommel	HB: 282 x H: 294.5			
FR	Tambour de frein	10 Holes			
			MODEL: FL 7, FM 7		
					
EN	Brake Drum	DD: 410 x	VOLVO	1599012	12 122 118
DE	Bremstrommel	HB: 282 x H: 306			
FR	Tambour de frein	10 Holes			
			MODEL: B12,B10, FL 7, F10, FH12		
					
EN	Brake Drum	DD: 410 x	VOLVO	1599968	12 122 107
DE	Bremstrommel	HB: 290 x H: 218			
FR	Tambour de frein	6 Holes			
			MODEL: FL 6, F10, FH12		
					



DAT NO.	OE NO.	APPLICATION	SPECIFICATION	DESCRIPTION
12 122 119	3 171 747	VOLVO	DD: 410 x HB: 282 x H: 294 10 Holes	
		<p>MODEL: FL 616-626, FL 7, FM 7</p>		
12 122 121	3 171 748	VOLVO	DD: 410 x HB: 282 x H: 306 10 Holes	
		<p>MODEL: B 12, B 10, FL 7, F10, FH 12</p>		

